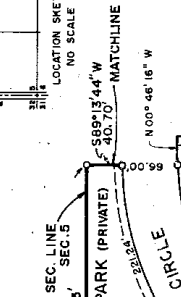
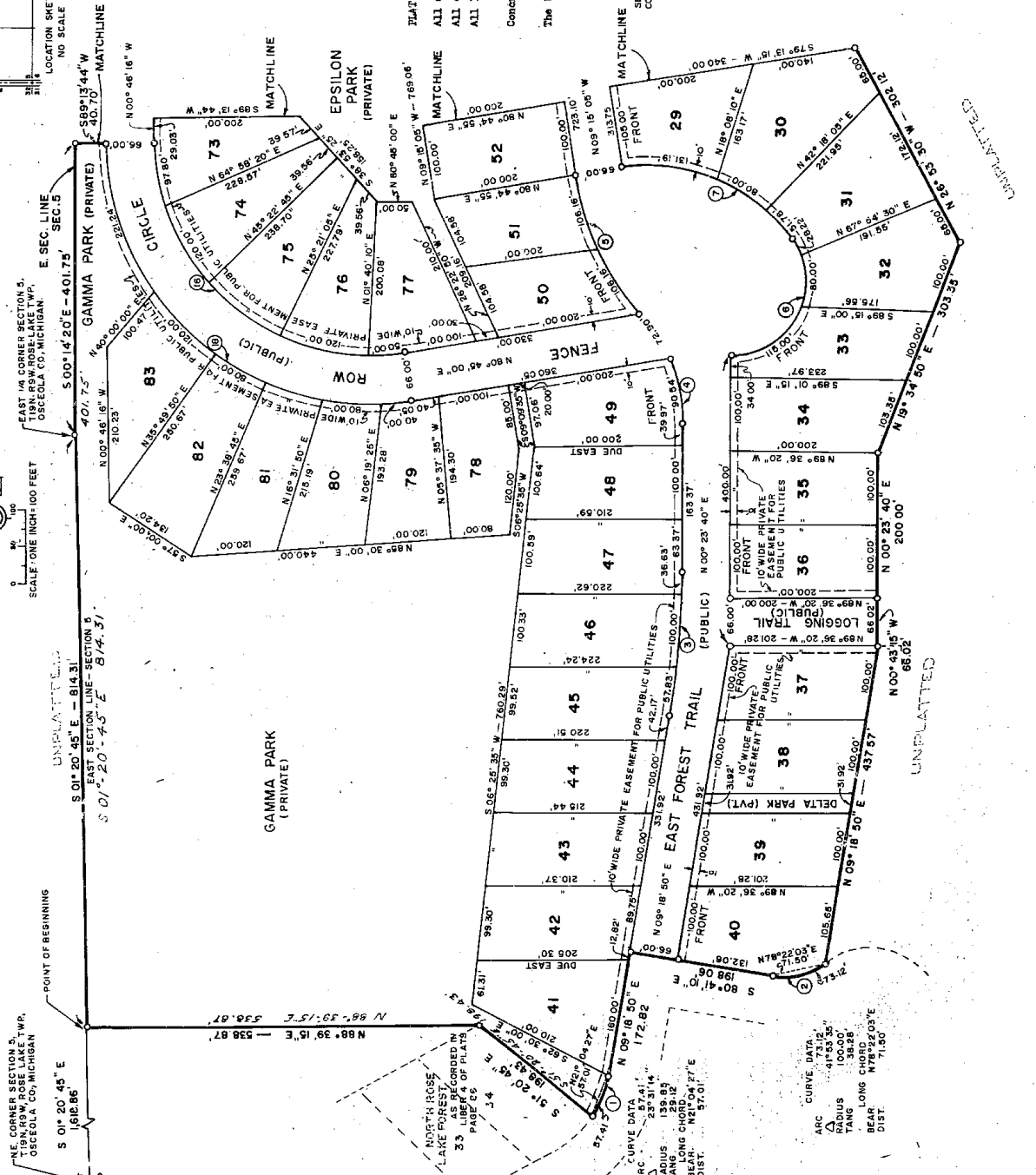


# PLAT OF EAST ROSE LAKE FOREST PART OF THE EAST 1/2 OF SECTION 5, T19N, R9W, ROSE LAKE TWP., OSCEOLA CO., MICHIGAN.



CURVE NO.	ARC.	RADIUS	TANG.	BEARING	CHORD	DISTANCE
1.	5741'	233'31"4"	29.12'	N21°04'27"E	57.01'	57.01'
2.	73.12'	417'53'35"	100.00'	N78°22'03"E	71.50'	71.50'
3.	194.46'	082'52'10"	249.14'	N49°54'15"W	184.26'	184.26'
4.	163.44'	43°54'25"	213.26'	N59°33'35"E	189.47'	189.47'
5.	212.32'	34°12'40"	355.07'	N28°22'20"E	209.17'	209.17'
6.	223.23'	127°43'40"	300.00'	N04°51'58"E	179.00'	179.00'
7.	562.97'	15°42'00"	200.00'	N88°00'00"E	200.00'	200.00'
16.	501.80'	37°21'44"	255.44'	N42°27'52"E	336.00'08"	477.85'
16.	621.24'	18°28'44"	361.44'	N48°41'52"E	530'00'08"	547.85'

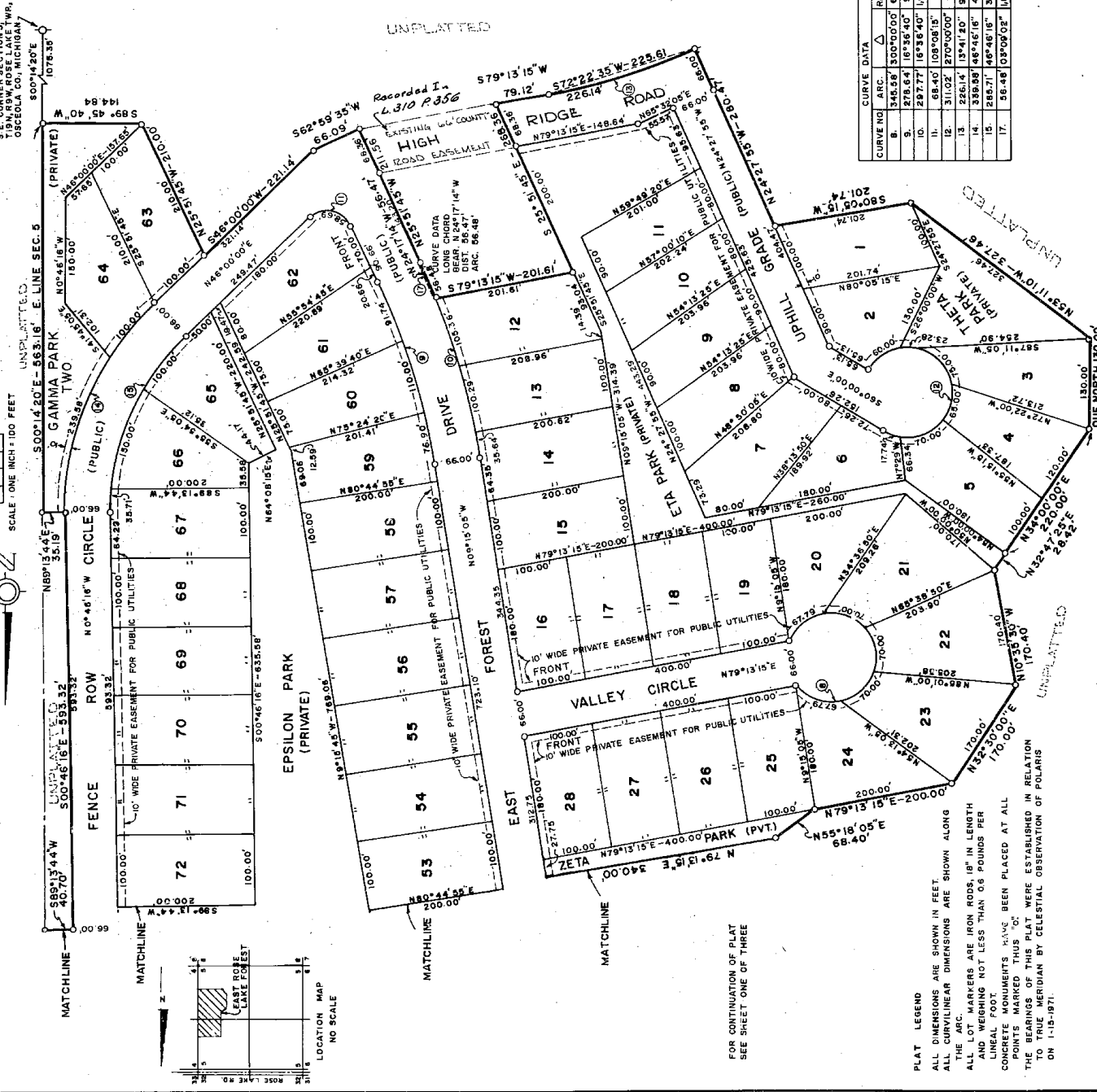
**PLAT LEGEND**  
 ALL dimensions are shown in feet.  
 ALL curvilinear dimensions are shown along the arc.  
 All lot markers are iron rods, 18" in length and weighing not less than 0.6 pounds per lineal foot.  
 Concrete monuments have been placed at all points marked thus "C".  
 The bearings of this plat were established in relation to true meridian by celestial observation of Polaris on 1-15-1971



This plat is subject to restrictions as required by Act 288 of 1967, as amended, on certain lots with respect to the requirements of the Michigan Department of Natural Resources and/or the Michigan Department of Public Health, which are recited in Liber 310, Page 284 or records of this county

# PLAT OF EAST ROSE LAKE FOREST

PART OF THE EAST 1/2 OF SECTION 5, T19N, R9W, ROSE LAKE TWP., OSCEOLA CO., MICHIGAN.



### SURVEYOR'S CERTIFICATE

I, Donald R. Verba, surveyor, certify that I have surveyed, divided and mapped the land shown on this plat, described as follows:

The land described is the unshared plat of EAST ROSE LAKE FOREST, Lake Township, Osceola County, Michigan, is described as follows: Commencing at the Northeast corner of Section 5; thence S 01°20'-45" E along the East section line 1618.85 feet to the POINT OF BEGINNING; thence S 01°20'-45" E along the East section line 814.31 feet to the East 1/4 corner of section 5; thence S 00°18'-29" E along the East section line of section 5 401.27 feet; thence S 89°13'-44" E along the East section line of section 5 35.19 feet; thence S 89°13'-44" E to the East section line of section 5 35.19 feet; thence S 00°18'-29" E along the East section line 533.16 feet; thence S 89°13'-44" E to the East section line 194.84 feet; thence S 25°51'-45" E 210.00 feet; thence S 89°13'-44" E 146.00 feet; thence S 25°51'-45" E 211.56 feet; thence along a curve to the right having an arc distance of 56.09 feet, a delta angle of 03°09'-02", a radius of 1027.09 feet, a tangent distance of 28.25 feet, a long chord of 200.17 feet; thence S 79°13'-15" E 200.00 feet; thence S 25°51'-45" E 268.86 feet; thence S 79°13'-15" E 79.12 feet; thence along a curve to the left having an arc distance of 226.14 feet, a tangent distance of 113.61 feet, a long chord bearing of S 79°27'-35" W, and a long chord distance of 225.61 feet; thence S 25°27'-35" W 280.14 feet; thence S 89°13'-44" E 200.00 feet; thence S 25°51'-45" E 210.00 feet; thence S 89°13'-44" E 227.00 feet; thence S 25°47'-25" E 28.42 feet; thence S 89°13'-44" E 109.35 feet; thence S 25°51'-45" E 170.40 feet; thence S 89°13'-44" E 170.00 feet; thence S 79°13'-15" E 200.00 feet; thence S 25°51'-45" E 68.40 feet; thence S 89°13'-15" E 202.12 feet; thence S 19°34'-50" E 303.35 feet; thence S 00°27'-40" E 200.00 feet; thence S 00°43'-15" W 66.02 feet; thence S 09°18'-50" E 477.37 feet; thence along a curve to the right having an arc distance of 77.12 feet, a delta angle of 58.28 degrees, a long chord of 100.00 feet; thence S 79°22'-03" E and a long chord distance of 71.50 feet; thence S 89°13'-44" E and a long chord distance of 71.50 feet; thence S 89°13'-44" E 130.06 feet; thence S 09°18'-50" E 172.82 feet; thence along a curve to the right an arc distance of 57.41 feet, a delta angle of 25°31'-18", a radius of 139.85 feet, a tangent distance of 29.12 feet, a long chord bearing of N 21°04'-27" E and a long chord distance of 57.01 feet; thence S 51°20'-25" E 198.43 feet; thence S 89°13'-44" E 338.28 feet to the POINT OF BEGINNING, containing 83 lots, 67.55 acres and 7 (seven) ACRES PRIVATE.

That I have made such survey, land division and plat by the direction of the owners of each land.

That such plat is a correct representation of all the exterior boundaries of the land surveyed and the subdivision of it.

That the required monuments and lot markers have been located in the ground or that survey has been depicted with the municipality, as required by Section 125 of the act.

That the accuracy of survey is within the limits required by Section 126 of the act.

That the bearings shown on the plat are expressed as required by Section 126 (3) of the act and as explained in the legend.

DATE  
JULY 6, 1973

Donald R. Verba  
Registered Land Surveyor  
No. 13603  
State of Michigan



CURVE NO.	ARC.	RADIUS	TANG.	BEARING	DISTANCE
8	345.58'	300.00'	0	N 0°46'45" W	66.00'
9	278.64'	6736.40'	140.30'	S 17°33'25" E	277.66'
10	207.77'	6736.40'	102.70'	S 17°33'25" E	236.73'
11	68.40'	109708.35'	36.24'	S 00°00'00" E	58.59'
12	311.02'	270940.00'	66.00'	S 18°00'00" E	93.34'
13	263.61'	13441.40'	146.83'	N 13°41'13" E	228.41'
14	263.61'	46745.16'	416.00'	N 22°36'52" E	535.23'
15	288.71'	46745.16'	350.00'	N 22°36'52" E	277.83'
17	58.48'	059090.02'	1027.09'	N 02°09'12" W	58.47'

FOR CONTINUATION OF PLAT  
SEE SHEET ONE OF THREE

PLAT LEGEND  
ALL DIMENSIONS ARE SHOWN IN FEET  
ALL CURVILINEAR DIMENSIONS ARE SHOWN ALONG THE ARC.  
ALL LOT MARKERS ARE IRON RODS, 18" IN LENGTH AND WEIGHING NOT LESS THAN 0.6 POUNDS PER LINEAL FOOT.  
CONCRETE MONUMENTS HAVE BEEN PLACED AT ALL POINTS MARKED THUS 'C'.  
THE BEARINGS OF THIS PLAT WERE ESTABLISHED IN RELATION TO THE MERIDIAN BY CELESTIAL OBSERVATION OF POLARIS ON 1-12-1871.

PLAT OF

# EAST ROSE LAKE FOREST

PART OF THE EAST 1/2 OF SECTION 5, T19N, R9W, ROSE LAKE TWP, OSCEOLA CO., MICHIGAN

ALL SIGNATURES ON THE ORIGINAL SHALL BE EXECUTED IN BLACK INK.

### PROPRIETOR'S CERTIFICATE

We as proprietors certify that we caused the above described plat to be subdivided, divided, marked and dedicated as represented on this plat and that the roads are for the use of the public; that the roads of Gamma, Eta, Delta, Epsilon, Theta, Zeta, and Gamma Park Two as shown on this plat are hereby dedicated to the lot owners of this subdivision and property owners in all future contiguous subdivisions. We further certify that the easements are private easements and that all other easements are for the uses shown on the plat.

Edward M. Knabusch  
Edward M. Knabusch  
1056 Macomb Avenue  
Monroe, Michigan 48161

Henrietta Knabusch  
Henrietta Knabusch  
1056 Macomb Avenue  
Monroe, Michigan 48161

Allan D. Wood  
Allan D. Wood  
2405 N. Main  
Royal Oak, Michigan  
48073

Lydia E. Wood  
Lydia E. Wood  
2405 N. Main  
Royal Oak, Michigan  
48073

Robert S. Feeley  
Robert S. Feeley  
Witness

Charles V. Rambau  
Charles V. Rambau  
Witness

### ACKNOWLEDGEMENT

State of Michigan }  
Osceola County } S.S.

Personally came before me this 7th day of JULY, 1973, the above named Edward M. Knabusch, a married man, and Henrietta Knabusch, his wife, and Allan D. Wood, a married man, and Lydia E. Wood, his wife,

to me known to be the persons who executed the foregoing instrument and acknowledged that they executed the same as their free act and deed.

Charles V. Rambau  
Notary Public, Charles V. Rambau  
Osceola County, Michigan

My commission expires DEC 18TH 1974

### COUNTY TREASURER'S CERTIFICATE

The records in my office show no unpaid taxes special assessments or other charges for the period ending December 31, 1973 involving the lands included in this plat.

Mabel Bates  
Mabel Bates  
Osceola County Treasurer

### COUNTY DRAIN COMMISSIONER'S CERTIFICATE

Approved on Sept 10, 1973 as complying with Sect. 163 of Act 286, P. A. 1967 and the applicable rules and regulations published by my office in the County of Osceola.

James E. Rohan  
James E. Rohan  
Drain Commissioner

### CERTIFICATE OF COUNTY ROAD COMMISSIONERS

Approved on 7-12-73 as complying with Section 163 of Act 286, P. A. 1967 and the applicable published rules and regulations of the Board of Road Commissioners of Osceola County.

Gerold M. Brown  
Gerold M. Brown  
Member

David Varhouse  
David Varhouse  
Member

Ellis Mazzett  
Ellis Mazzett  
Chairman

### CERTIFICATE OF MUNICIPAL APPROVAL

I certify that this plat was approved by the Township Board of the Township of Rose Lake, at a meeting held January 6, 1973 and was reviewed and found to be in compliance with Act 286, P. A. 1967. This plat was approved by Mr. Michael Ulrich, Sanitarian, Osceola County Health Department on Feb. 15, 1974 as required on the preliminary plat.

Kathrine M. Swenson  
Kathrine M. Swenson  
Clerk

### COUNTY PLAT BOARD CERTIFICATE

This plat has been reviewed and is approved by the Osceola County Plat Board on December 26, 1973 as being in compliance with all of the provisions of Act 286, P. A. 1967, and the plat board's applicable rules and regulations.

Elva Edstrom  
Elva Edstrom  
Register of Deeds

Carl L. Wyman  
Carl L. Wyman  
County Clerk

Mabel Bates  
Mabel Bates  
County Treasurer

### RECORDING CERTIFICATE

State of Michigan  
Osceola County.

This plat was received for record on the 31st day of January, A.D. 1974 at 3:00 P. M., recorded in Liber 5 of plats on Pages 15-16-17.

Elva Edstrom 151  
Elva Edstrom  
Register of Deeds

Richard E. Lomas  
February 4, 1974