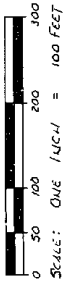
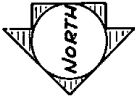


NORTH ROSE LAKE FOREST HILLS

PART OF THE EAST 1/2 OF THE SW 1/4 OF SECTION 5 AND PART OF THE NW 1/4 OF THE SE 1/4 OF SECTION 5, T-19-N, R-9-W, ROSE LAKE TOWNSHIP, OSCEOLA COUNTY, MICHIGAN



LEGEND

1. ALL DIMENSIONS ARE IN FEET.
2. ALL CURVE DIMENSIONS ARE ALONG THE ARC.
3. LOT CORNERS HAVE BEEN MARKED WITH 1/2" DIA. IRON RODS, 18" IN LENGTH.
4. CONCRETE MONUMENTS HAVE BEEN PLACED AT ALL POINTS MARKED THIS WAY.
5. BEARINGS WERE ESTABLISHED FROM THE RECORD PLAT, T-19-N, R-9-W, WITH PLAT NO. 297-300.

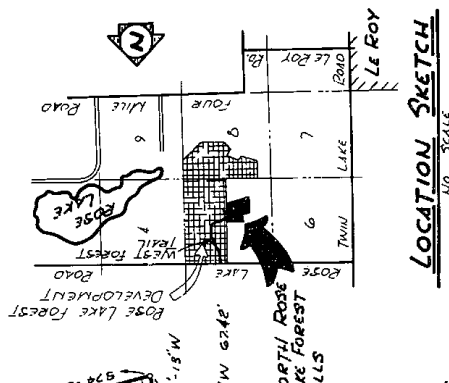
RECORDING CERTIFICATE

STATE OF MICHIGAN)
OSCEOLA COUNTY)

THIS PLAT WAS RECEIVED FOR RECORD ON THE 12th DAY OF March A.D. 1977 AT 2:26 P.M., RECORDED IN LIBER 527 OF PLATS ON PAGE 173-222.

Gerald Jacob Shaw
ELVA EDITION REGISTER OF DEEDS

This plat is subject to restrictions as required by Act 288 of 1967, as amended on certain lots of this plat, as required by the Michigan Department of Natural Resources and the Michigan Department of Public Health, which are recorded in Liber 527 on Page 173 of records of this County.



LOCATION SKETCH

