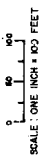
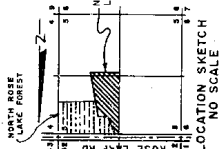


PLAT OF NORTHWEST ROSE LAKE FOREST

PART OF THE EAST 1/2 OF SECTION 5, T19N, R9W,
ROSE LAKE TWP, OSCEOLA CO, MICHIGAN.



CURVE NO.	ANG.	CHORD	RADIUS	TRAC.	BEARINGS	DISTANCE
1.	181.50	63.3646'	18.000	102.35	N83°47'17" W	174.98
2.	174.60	54.4240'	32.488	77.28	N21°12'00" E	99.90
3.	172.68	32.7000'	308.18	89.24	N29°45'00" W	171.34
4.	184.23	32.7000'	240.18	70.00	N29°45'00" W	134.41
5.	98.88	89.7228'	293.2	62.83	S33° 73' W	86.35
6.	100.52	86.2702'	267.6	62.83	N58°48'31" W	91.89
7.	340.50	300.0000'	550.0	-39.11	N00°07'02" W	65.96
8.	244.40	290.0000'	491.13	68.84	N29°00'00" W	184.03
9.	152.82	187.0311'	488.21	68.87	N82°21'51" W	135.43



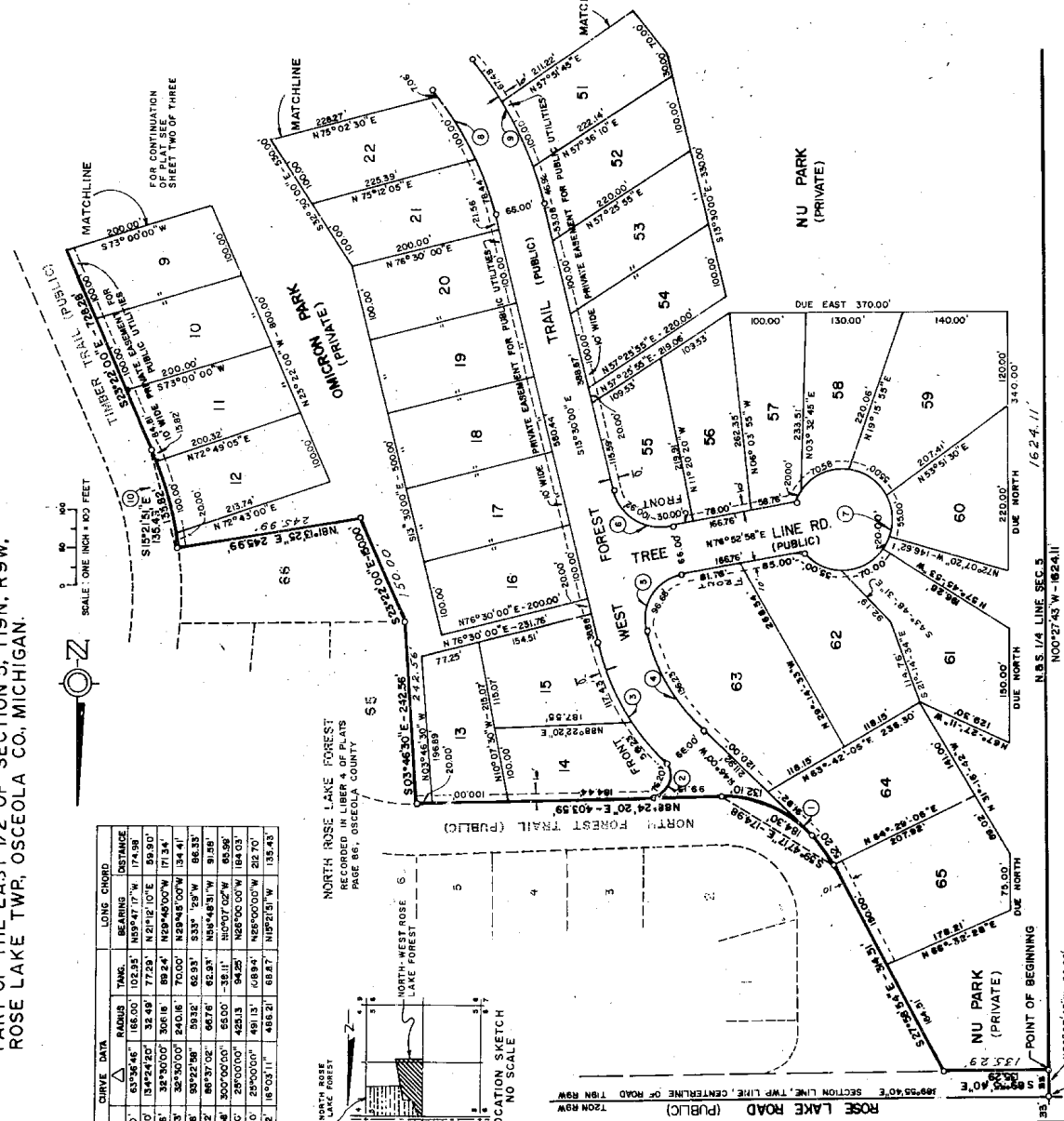
NORTH ROSE LAKE FOREST
RECORDED IN LIBER 2 PLATS
PAGE 88, OSCEOLA COUNTY

PLAT LEGEND

All dimensions are shown in feet.
All curvilinear dimensions are shown along the arc.
All lot markers are iron rods, 18" in length and weighing not less than 0.6 pounds per lineal foot.
Concrete monuments have been placed at all points marked thus "O".

The bearings of this plat were established in relation to true meridian by celestial observation of Polaris on 1-15-1971.

This plat is subject to restrictions as required by Act 288 of 1967, as amended on certain lots with respect to the requirements of the Michigan Department of Natural Resources and/or the Michigan Department of Public Health, which are recorded in Liber 310, Page 486 of records of this county.



UNPLATTED

PLAT OF NORTHWEST ROSE LAKE FOREST
 PART OF THE EAST 1/2 OF SECTION 5, T19N, R9W, ROSE LAKE TWP, OSCEOLA CO, MICHIGAN

ALL SIGNATURES ON THE ORIGINAL SHALL BE EXECUTED IN BLACK INK.

PROPRIETOR'S CERTIFICATE

We, as proprietors certify that we caused the land embraced in this plat to be surveyed, divided, mapped and dedicated as represented on this plat and that the roads are for the use of the public; that No. and Omoron Parks as shown on this plat are hereby dedicated to the lot owners of this subdivision and property owners in all future contiguous plats where title is traceable to this proprietor; and that the public utility easements are private easements and that all other easements are for the uses shown on the plat.

Edward M. Knabusch
 Edward M. Knabusch 1050 Macomb Avenue
 Monroe, Michigan 48161

Henrietta Knabusch
 Henrietta Knabusch 1050 Macomb Avenue
 Monroe, Michigan 48161

Allan D. Wood
 Allan D. Wood 2105 N. Main
 Royal Oak, Michigan 48073

Lydia E. Wood
 Lydia E. Wood 2105 N. Main
 Royal Oak, Michigan 48073

Robert S. Feeley Witness
Charles V. Rambou Witness

ACKNOWLEDGEMENT

State of Michigan } S.S.
 Osceola County }

Personally came before me this 9th day of JULY, 1974, the above named Edward M. Knabusch, a married man, and Henrietta Knabusch, his wife, and Allan D. Wood, a married man, and Lydia E. Wood, his wife,

to me known to be the persons who executed the foregoing instrument and acknowledged that they executed the same as their free act and deed.

Charles V. Rambou
 Notary Public, Charles V. Rambou Oakland County, Michigan
 My commission expires OCT. 18th 1974

COUNTY TREASURER'S CERTIFICATE

The records in my office show no unpaid taxes or delinquent taxes for the five years preceding January 1, 1973 involving the lands included in this plat.

Mabel Bates Osceola County Treasurer

COUNTY DRAIN COMMISSIONER'S CERTIFICATE

Approved on Oct. 10, 1973 as complying with Section 192 of Act 286, P.A. 1967 and the applicable rule and regulations published by my office in the County of Osceola.

James E. Rohan Drain Commissioner

CERTIFICATE OF COUNTY ROAD COMMISSIONERS

Approved on Oct. 10, 1973 as complying with Section 183 of Act 286, P.A. 1967 and the applicable published rules and regulations of the Board of Road Commissioners of Osceola County.

Gerald M. Brown Member
David Yarhouse Member
Ellis Bazzett Chairman

CERTIFICATE OF MUNICIPAL APPROVAL

I certify that this plat was approved by the Township Board of the Township of Rose Lake, at a meeting held December 6, 1973 and was reviewed and found to be in compliance with Act 286, P.A. 1967. This plat was approved by Mr. Michael Ulrich, Sacrean, Osceola County Health Department on Oct. 22, 1972 as required on the preliminary plat.

Kathrine M. Swanson Clerk
 Kathrine M. Swanson

COUNTY PLAT BOARD CERTIFICATE

This plat has been reviewed and is approved by the Osceola County Plat Board on December 16, 1973 as being in compliance with all of the provisions of Act 286, P.A. 1967, and the plat board's applicable rules and regulations.

Elva Edstrom Register of Deeds
Carl L. Wyman County Clerk
Mabel Bates County Treasurer

RECORDING CERTIFICATE

State of Michigan)
 Osceola County)

This plat was received for record on the 31st day of JANUARY A.D. 1974 at 3:02 P.M., recorded in Liber 5 of plats on Pages 27-32-33.

Elva Edstrom 151 Register of Deeds
 Elva Edstrom

Richard E. Loman
February 4, 1974