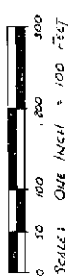


ROSE LAKE FOREST HILLS

PART OF THE E 1/4 OF THE SW 1/4, SECTION 5, T19N-R9W,
ROSE LAKE TOWNSHIP, OSCEOLA COUNTY, MICHIGAN

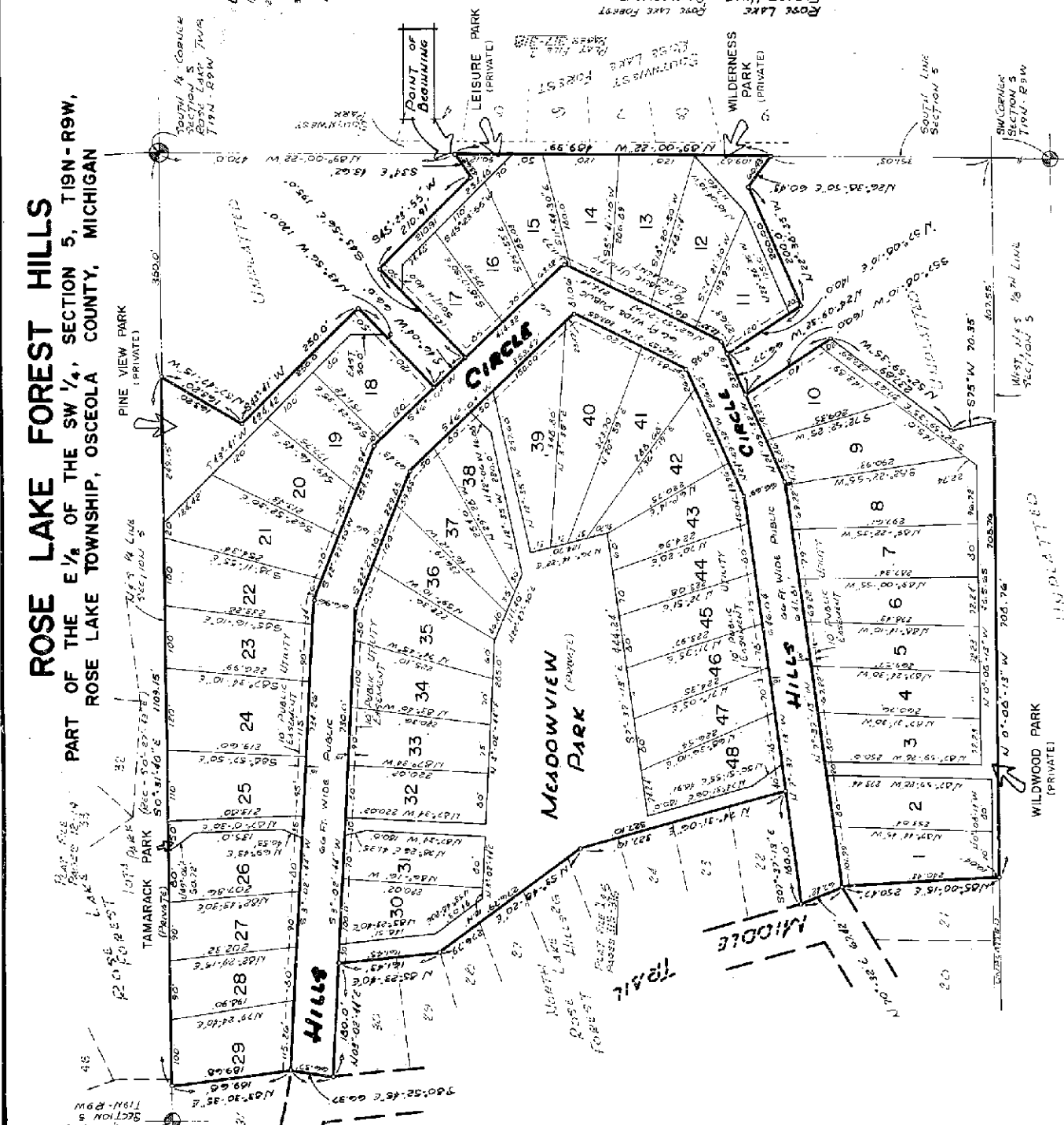
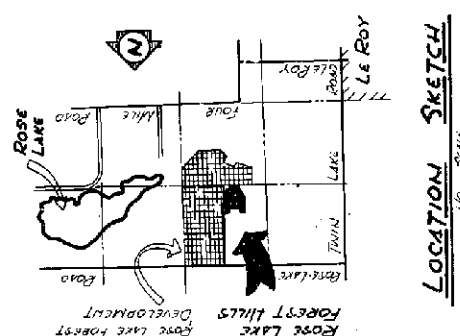


- LEGEND**
1. ALL DIMENSIONS ARE IN FEET.
 2. ALL CURVE DIMENSIONS ARE GIVING THE ARC.
 3. LOT CORNERS HAVE BEEN MARKED WITH 1/2" DIA. IRON RODS, 3" IN LENGTH.
 4. CONCRETE MONUMENTS HAVE BEEN PLACED AT ALL POINTS MARKED THUS "a".
 5. BEARINGS WERE ESTABLISHED FROM THE RECORDED PLAT OF "SOUTH PINE LAKE FOREST, BEIT FILE PLAT 88997-300."

CERTIFIED TRUE COPY OF
RECORDED PLAT

Loren E. Monroe
LOREN E. MONROE
STATE TREASURER

By *Richard E. Linnick, Notary Public*
Richard E. Linnick, Notary Public
Date: April 12, 1974



ROSE LAKE FOREST HILLS
PART OF THE E 1/2 OF THE SW 1/4, SECTION 5, T19N - R9W,
ROSE LAKE TOWNSHIP, OSCEOLA COUNTY, MICHIGAN

SURVEYOR'S CERTIFICATE

I, Gerald J. Gray, surveyor, certify that I have surveyed, divided and mapped the land shown on this plat, the land embraced in the plat of ROSE LAKE FOREST HILLS SUBDIVISION, being a part of the East 1/2 of the Southwest 1/4 of Section 5, T19N - R9W, Rose Lake Township, Osceola County, more particularly described as:

beginning at a point on the South line of Section 5 which is R 89° 00' 00" - 32' 4" 470.0 feet from the South 1/4 corner of said Section 5; thence N 89° 00' 22" - 4" 499.99 feet along the South line of Section 5; thence N 26° 30' 50" - 8" 50.43 feet; thence N 62° 38' 35" - 2" 200.0 feet; thence N 57° 08' 30" - 8" 140.0 feet; thence N 29° 39' 37" - 4" 66.77 feet; thence S 27° 08' 19" - 4" 180.0 feet; thence N 56° 39' 35" - 4" 202.89 feet; thence S 72° 16' 15" 176.15 feet; thence S 68° 38' 37" - 4" 88.84 feet; thence S 70° 52' 15" 164.15 feet; thence S 71° 42' 32" 167.42 feet; thence S 81° 00' 15" - 8" 259.07 feet; thence N 70° 32' 4" 87.42 feet; thence S 07° 37' 13" - 4" 180.0 feet; thence N 74° 53' 06" - 2" 327.10 feet; thence N 51° 48' 30" - 2" 276.79 feet; thence N 85° 23' 40" - 4" 161.43 feet; thence N 63° 02' 34" - 8" 180.0 feet; thence S 86° 52' 35" - 8" 56.37 feet; thence N 83° 30' 37" - 4" 185.98 feet; thence S 90° 31' 40" - 8" 109.99 feet; thence S 83° 14' 15" 166.15 feet; thence S 76° 45' 15" 174.15 feet; thence S 74° 02' 15" 164.15 feet; thence S 85° 46' 8" 170.0 feet; thence S 86° 02' 46" 166.0 feet; thence S 83° 02' 15" 166.15 feet; thence S 85° 23' 40" - 4" 161.43 feet. This plat contains 48 (forty-eight) lots and 6 (six) acreage. This plat was surveyed, land division and plat by the direction of the owner of each land.

That each plat is a correct representation of all the exterior boundaries of the land shown on or included in the same. That the required assessments and taxes have been paid on the ground or that survey has been deposited with the municipality, as required by Section 125 of the act.

That the accuracy of survey is within the limits required by Section 126 of the act.

That the bearings on the plat are expressed as required by Section 126 (3) of the act and as explained in the legend.

DEC 12 '68

Gerald J. Gray

Registered Land Surveyor No. 17764

Gerald J. Gray's President
Mid-Michigan Engineering & Survey Co., Inc.
110 1/2 North Michigan Avenue
Ego Rapids, Michigan 49707



PROPRIETOR'S CERTIFICATE

Pine River Fisher Co., a corporation duly organized and existing under the laws of the State of Michigan by Allan D. Wood, President, as proprietor, has caused the land to be surveyed, divided, mapped and dedicated as represented on this plat and that Hills Circle is for the use of the public that WILLOW PARK, WILDFIRE PARK, LEISURE PARK, PINE VIEW PARK, TAMBACK PARK AND MEADOWS PARK ARE PRIVATE FOR THE USE OF THE LOT OWNERS OF THIS PLAT AND ALL OTHER CONTIGUOUS PLATS WHERE TITLE IS FEASIBLE TO THIS PROPRIETOR. That the public utility assessments are private assessments and that all other assessments are for the uses shown on the plat.

PINE RIVER FISHER CO.
2317 NORTH MAIN
ROYAL OAK, MICHIGAN 48073

Allan D. Wood

President

Rolland A. Girdley
EUGENE V. EARL

Rolland A. Girdley
President

EUGENE V. EARL

ACKNOWLEDGMENT

State of Michigan
County of Osceola

Personally appeared on this 12th day of DECEMBER, 1968, Allan D. Wood, President of the above named corporation, to me known to be the person who executed the foregoing instrument, and to me known to be such president of said corporation, and acknowledged that he executed the foregoing instrument as such officer on the free act and deed of said corporation, by the authority.

Notary Public in and for the State of Michigan, Osceola County, Michigan
ROLLEND A. GIRDLEY
My Commission Expires August 23, 1970

COUNTY TREASURER'S CERTIFICATE

The records in my office show no unpaid taxes or special assessments for the five years preceding October 2, 1967, involving the lands included in this plat. RECERTIFIED DATE December 12, 1968

Elizabeth Steffert
County Treasurer

CERTIFICATE OF MUNICIPAL APPROVAL

I certify that this plat was approved by the Township Board of the Township of Rose Lake, at a meeting held on June 19, 1968, and was reviewed and found to be in compliance with Act 288, P.A. 1967. This plat was approved by the Central Michigan District Health Department on August 1, 1968, as required on the preliminary plat.

James A. Bohlen
Mayor

Walter R. Wagon
County Clerk

Rolland A. Girdley
County Treasurer

COUNTY PLAT BOARD CERTIFICATE
THIS PLAT HAS BEEN REVIEWED AND IS APPROVED BY THE OSCEOLA COUNTY PLAT BOARD ON August 1, 1968, IN COMPLIANCE WITH ALL OF THE PROVISIONS OF ACT 288, P.A. 1967, AND THE PLAT BOARD'S APPLICABLE RULES AND REGULATIONS.

Elva Eusebio
Register of Deeds

RECERTIFIED DATE
January 16, 1979

RECORDER'S CERTIFICATE
THIS PLAT WAS RECORDED IN THE PUBLIC RECORDS OF OSCEOLA COUNTY, MICHIGAN, ON the 12th day of DECEMBER, 1968, RECORDED IN PLAT BOOK PAGE 377-378.

John H. Decker
Register of Deeds

PROPRIETOR'S CERTIFICATE
WE AS PROPRIETORS CERTIFY THAT WE CAUSED THE SAID EMBLEM: IN THE U.S.A. TO BE PLACED ON THE SAID PLAT AND WE CERTIFY THAT WILLOW PARK, WILDFIRE PARK, LEISURE PARK, PINE VIEW PARK, TAMBACK PARK AND MEADOWS PARK ARE PRIVATE PROPERTY OF THE LOT OWNERS OF THIS PLAT AND ALL OTHER CONTIGUOUS PLATS WHERE TITLE IS FEASIBLE TO THIS PROPRIETOR.

Gerald J. Gray
President

ACKNOWLEDGMENT
STATE OF MICHIGAN
COUNTY OF OSCEOLA

Personally appeared before me on this 12th day of DECEMBER, 1968, Allan D. Wood, President of the above named corporation, to me known to be the person who executed the foregoing instrument, and to me known to be such officer of said corporation, and acknowledged that he executed the foregoing instrument as such officer on the free act and deed of said corporation, by the authority.

Notary Public in and for the State of Michigan, Osceola County, Michigan
Russell E. Bennett
Commission Expires 12-13-70

Notary Public in and for the State of Michigan, Osceola County, Michigan
James V. Earle
Commission Expires 12-13-70

Notary Public in and for the State of Michigan, Osceola County, Michigan
James V. Earle
Commission Expires 12-13-70

Notary Public in and for the State of Michigan, Osceola County, Michigan
James V. Earle
Commission Expires 12-13-70

Notary Public in and for the State of Michigan, Osceola County, Michigan
James V. Earle
Commission Expires 12-13-70

Notary Public in and for the State of Michigan, Osceola County, Michigan
James V. Earle
Commission Expires 12-13-70

Notary Public in and for the State of Michigan, Osceola County, Michigan
James V. Earle
Commission Expires 12-13-70

Notary Public in and for the State of Michigan, Osceola County, Michigan
James V. Earle
Commission Expires 12-13-70

Notary Public in and for the State of Michigan, Osceola County, Michigan
James V. Earle
Commission Expires 12-13-70

Notary Public in and for the State of Michigan, Osceola County, Michigan
James V. Earle
Commission Expires 12-13-70

Notary Public in and for the State of Michigan, Osceola County, Michigan
James V. Earle
Commission Expires 12-13-70

Notary Public in and for the State of Michigan, Osceola County, Michigan
James V. Earle
Commission Expires 12-13-70

Notary Public in and for the State of Michigan, Osceola County, Michigan
James V. Earle
Commission Expires 12-13-70