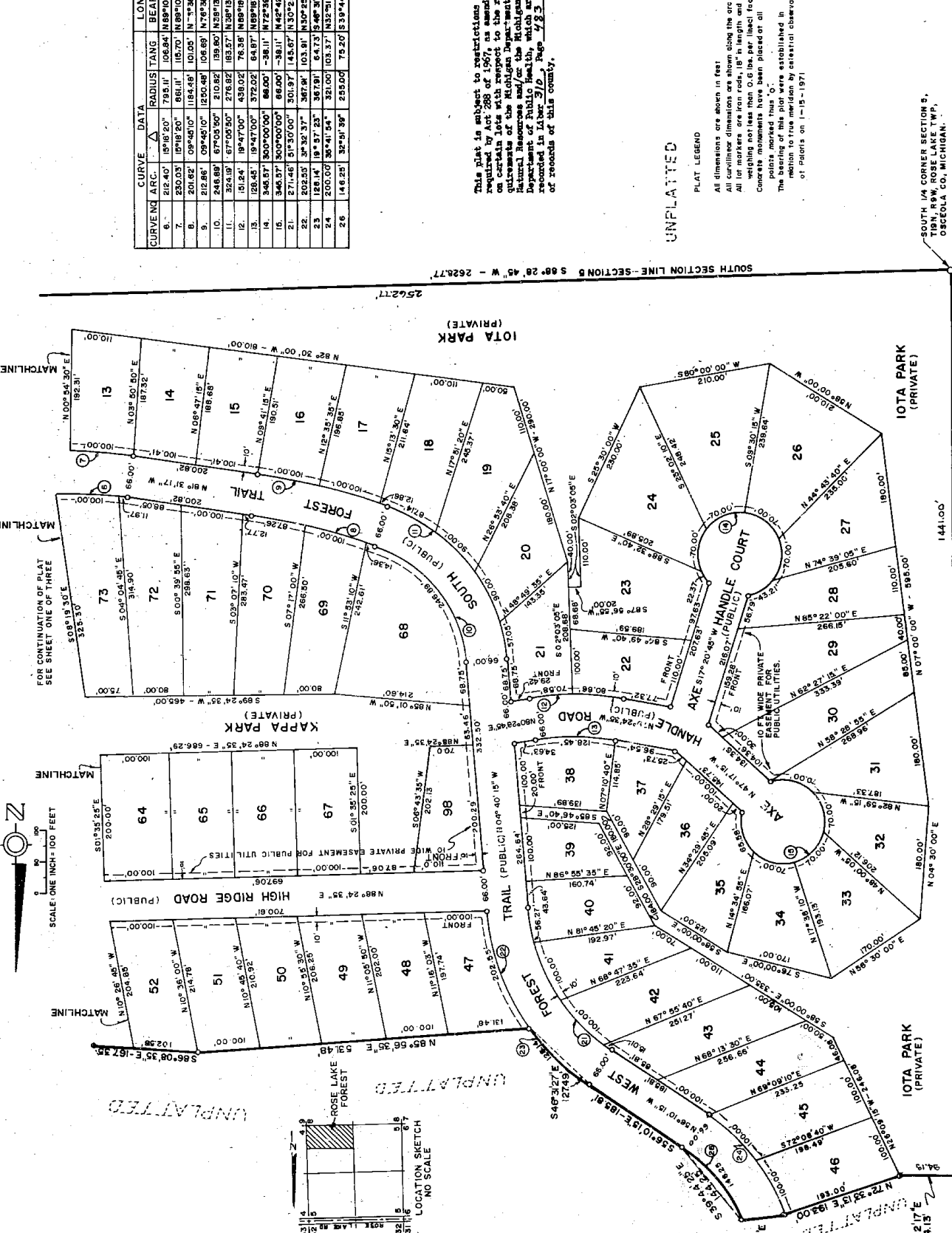




# PLAT OF ROSE LAKE FOREST

PART OF THE EAST 1/2 OF SECTION 5, T19N, R9W, ROSE LAKE TWP., OSCEOLA CO., MICHIGAN.



CURVE NO.	ARC	TANG	RADIUS	BEARING	LONG CHORD
6.	216.40'	189.8220'	795.11'	106.84' N89°10'35" W	211.77'
7.	230.03'	189.8220'	861.11'	116.70' N89°10'35" W	229.30'
8.	210.62'	09°45'00"	1184.68'	101.05' N77°38'42" W	201.56'
9.	212.66'	09°45'00"	1230.48'	105.69' N77°38'42" W	212.60'
10.	246.89'	67°03'50"	210.82'	193.80' N38°13'10" W	233.02'
11.	254.19'	19°47'00"	438.02'	216.82' N68°08'05" W	300.58'
12.	126.48'	19°47'00"	375.02'	64.97' N68°08'05" W	127.91'
13.	346.57'	30°00'00"	66.00'	-38.11' N42°42'40" E	66.00'
14.	346.57'	30°00'00"	66.00'	-38.11' N42°42'40" E	66.00'
15.	271.46'	51°30'00"	301.97'	145.67' N30°23'15" W	262.41'
21.	202.55'	3°32'37"	367.81'	101.91' N30°23'15" W	200.00'
22.	126.14'	19°57'23"	367.81'	64.73' S48°31'27" E	127.48'
23.	200.00'	36°41'54"	321.00'	103.37' N32°31'35" W	196.78'
24.	146.23'	32°51'39"	255.00'	79.20' S39°44'20" E	144.29'

This plat is subject to restrictions as required by the Michigan Department of Natural Resources and/or the Michigan Department of Public Health, which are recorded in Index 370, Page 423 of records of this county.

UNPLATTED

PLAT LEGEND

All dimensions are shown in feet. All curvilinear dimensions are shown along the arc. All lot markers are iron rods, 1/2" in length and weighing not less than 0.6 lbs. per linear foot. Concrete monuments have been placed on all corners of lots. The bearing of this plat were established in relation to true meridian by celestial observations of Polaris on 1-15-1971.

SOUTH 1/4 CORNER SECTION 5, T19N, R9W, ROSE LAKE TWP., OSCEOLA CO., MICHIGAN.

NORTH-SOUTH 1/4 LINE UNPLATTED 1441.00'

100°27'43" W - 141.00'

54101

PLAT OF  
**ROSE LAKE FOREST**  
 PART OF THE EAST 1/2 OF SECTION 5, T19N, R9W, ROSE LAKE TWP, OSCEOLA CO, MICHIGAN

ALL SIGNATURES ON THE ORIGINAL SHALL BE EXECUTED IN BLACK INK.

PROPRIETOR'S CERTIFICATE

We as proprietors certify that we caused the land embraced in this plat to be surveyed, divided, mapped and dedicated as represented on this plat and that the roads are for the use of the public; that Lumboe, Kopper, Wu, and Iona Park

as shown on this plat are hereby dedicated to the lot owners of this subdivision and property owners in all future contiguous plats where title is traceable to this proprietor; and that the public utility easements are private easements and that all other easements are for the uses shown on the plat.

Edward M. Knabusch  
 Edward M. Knabusch 1050 Macomb Avenue  
 Monroe, Michigan 48161

Henrietta Knabusch  
 Henrietta Knabusch 1050 Macomb Avenue  
 Monroe, Michigan 48161

Allan D. Wood  
 Allan D. Wood 2405 N. Main  
 Royal Oak, Michigan 48073

Lynna E. Wood  
 Lynna E. Wood 2405 N. Main  
 Royal Oak, Michigan 48073

Theodore J. Berdis  
 Theodore J. Berdis 15994 Longacre  
 Detroit, Michigan 48227

Elenor M. Bessis  
 Elenor M. Bessis 15994 Longacre  
 Detroit, Michigan 48227

Robert S. Feeley  
 Robert S. Feeley Witness

Charles V. Rambeau  
 Charles V. Rambeau Witness

ACKNOWLEDGEMENT

State of Michigan }  
 County } S.S.

Personally came before me this 7th day of July, 1973, the above named Edward M. Knabusch, a married man, and Henrietta Knabusch, his wife, Allan D. Wood, his wife, and Lynna E. Wood his wife, THEODORE J. BERDIS, A MAJORED MAN, and ELANOR M. BESSIS, HIS WIFE, to me known to be the persons who executed the foregoing instrument and acknowledged that they executed the same as their free act and deed.

Charles V. Rambeau  
 Notary Public, Charles V. Rambeau - Oscoda County, Michigan

My commission expires Oct. 18th 1974

COUNTY TREASURER'S CERTIFICATE

The records in my office show no unpaid taxes or special assessments for the five years preceding September 10, 1973 involving the lands included in this plat.

Mabel Bates  
 Mabel Bates  
 Osceola County Treasurer

COUNTY DRAIN COMMISSIONER'S CERTIFICATE

Approved on Sept 19 1973 as complying with Section 192 of Act 288, P.A. 1967 and the applicable rule and regulations published by my office in the County of Osceola.

James E. Rohen  
 James E. Rohen  
 Drain Commissioner

CERTIFICATE OF COUNTY ROAD COMMISSIONERS

Approved on Sept 19 1973 as complying with Section 193 of Act 288, P.A. 1967 and the applicable published rule and regulations of the Board of Road Commissioners of Osceola County.

Gerald M. Brown  
 Gerald M. Brown  
 Member

David Yarnouse  
 David Yarnouse  
 Member

Ellis Bazzy  
 Ellis Bazzy  
 Chairman

CERTIFICATE OF MUNICIPAL APPROVAL

I certify that this plat was approved by the Township Board of the Township of Rose Lake, at a meeting held August 6, 1973 and was reviewed and approved to be in compliance with Act 288, P.A. 1967.

This plat was approved by Mr. Michael Ulrich, Sanitarian, Osceola County Health Department, on Oct 19, 1972 as required on the preliminary plat.

Kathrine M. Swanson  
 Kathrine M. Swanson  
 Clerk

COUNTY PLAT BOARD CERTIFICATE

This plat has been reviewed and is approved by the Osceola County Plat Board on December 26 1973 as being in compliance with all of the provisions of Act 288, P.A. 1967, and the plat board's applicable rules and regulations.

Elva Edstrom  
 Elva Edstrom  
 Register of Deeds

Carl L. Wyman  
 Carl L. Wyman  
 County Clerk

Mabel Bates  
 Mabel Bates  
 County Treasurer

RECORDING CERTIFICATE

State of Michigan  
 Osceola County

This plat was received for record on the 3rd day of JANUARY, A.D. 1974 at 3:29 P.M., recorded in Liber 5 of plats on Pages 12-13-14.

Elva Edstrom  
 Elva Edstrom  
 Register of Deeds

Richard E. Lomas  
 Richard E. Lomas  
 February 4, 1974